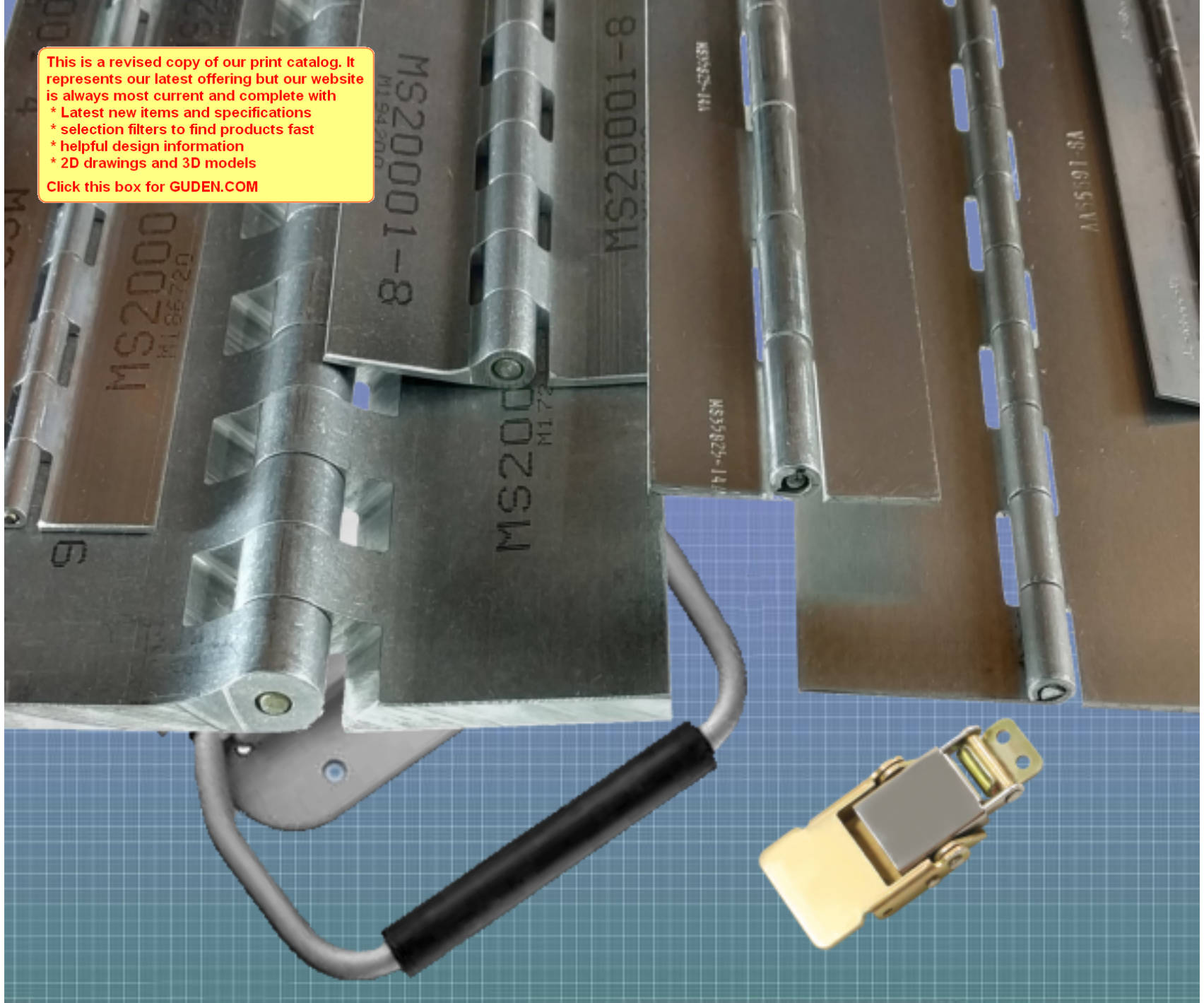


This is a revised copy of our print catalog. It represents our latest offering but our website is always most current and complete with

- * Latest new items and specifications
- * selection filters to find products fast
- * helpful design information
- * 2D drawings and 3D models

Click this box for GUDEN.COM

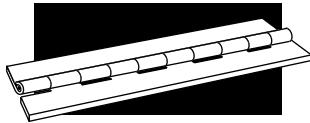


GUDEN
INDUSTRIAL HARDWARE MADE EASY

**MILITARY
HARDWARE**

CONTENTS

30	<i>MS-20001 Series Hinges</i>	31	<i>MS-35000 Series Hinges</i>	32	<i>Chest Handles</i>
30	<i>MS-20257 Series Hinges</i>	31	<i>A-A-55000 Series Hinges</i>	32	<i>Spring-Loaded Chest Handles</i>
30	<i>MS-20253 Series Hinges</i>	31	<i>Compression Spring Catches</i>	32	<i>Navy Locker Hardware</i>

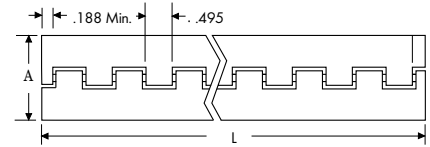
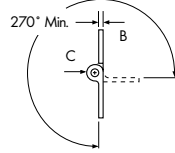


MILITARY HARDWARE

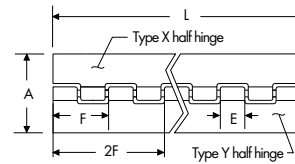
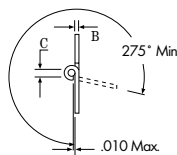
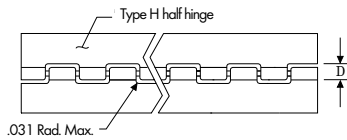


MS20001 SERIES CONTINUOUS HINGES; TYPE 2024-T3511 EXTRUDED ALUMINUM

Specify	For
P	Anodized per Mil-A-8625, Type II
C	Alodine per Mil-DTL-5541
A	Aluminum Alloy 7075-T 73511



Dash No.	A Open Width	B - Leaf Thickness		C Pin Diameter
		Maximum	Minimum	
-2	1.062	.056	.044	.090
-3	1.250	.056	.044	.090
-4	1.500	.056	.044	.090
-5	1.750	.056	.044	.090
-6	2.000	.056	.044	.090
-8	2.000	.076	.064	.180
-9	2.500	.056	.044	.090
-10	2.750	.056	.044	.090
-12	3.375	.115	.103	.090
-14	3.719	.163	.149	.129
-16	3.938	.210	.196	.180



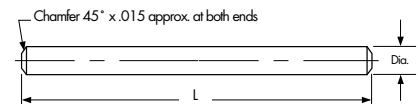
MS20257 SERIES CONTINUOUS HINGES

Dash No.			A	B Leaf Thickness		C Hole Diameter		D Slot Depth		E	F	Pin Diameter
Alum. Alloy	Unano- dized	Ano- dized	Open Width	Alum. Alloy	Cor. Res. Steel	Alum. Alloy	Cor. Res. Steel	Alum. Alloy	Cor. Res. Steel	Loop	Pitch	Cor. Res. Steel
1	P1	C1	.75	.032	.031	.066	.066	.169	.166	.490	1.000	.063
2	P2	C2	1.06	.040	.037	.093	.093	.220	.211	.490	1.000	.090
3	P3	C3	1.25	.040	.050	.093	.121	.220	.278	.490	1.000	.118
4	P4	C4	1.50	.040	.062	.093	.121	.220	.314	.490	1.000	.118
5	P5	C5	2.00	.051	.062	.093	.183	.253	.376	.490	1.000	.180
6	P6	C6	2.00	.064	.062	.183	.183	.382	.376	1.990	4.047	.180

MS20253* AND A-A-55486 HINGE PINS FOR MS20257 AND MS20001 SERIES CONTINUOUS HINGES

Dash No.	Cadmium plated		Passivated	Diameter
	P1	P2		
-P1	-1			.062
-P2	-2			.089
-P3	-3			.117
-P4	-4			.179
-P5	-5			.129

1. Use cadmium-plated, corrosion-resistant steel with aluminum alloy hinge.
2. Use passivated corrosion-resistant steel pin with corrosion-resistant steel hinge.
3. Normally supplied 72" long, i.e., MS20253-7200.
4. Add L length to denote solid film lubricant.





MS-35000 SERIES CONTINUOUS HINGES

MS No.	Leaf				Dash No. - Open Width																				
	Thickness	Knuckle	Pin Dia.	Length	-1	-2	-3	-4	-5	-6	-7	-8	-9	-10	-11	-12	-13	-14	-15	-16	-17	-18	-19	-20	
MS-35821	.032	.50	.063	72						.75	1	1.06	1.25	1.5											
MS-35822	.040	.50	.091	72									1.06	1.25	1.5	2									
	.040	.62	.091	72.50													1.06	1.25	1.5	2					
MS-35823	.050	.62	.125	72.50					1.06	1.5	2	2.5													
MS-35825	.060	.62	.125	85									1.06	1.5	2	2.5									
	.060	1	.125	84													1.06	1.5	2	2.5					
MS-35826	.060	1	.187	84									1.06	1.5	2	2.5									
	.060	2	.187	84													1.06	1.5	2	2.5					
MS-35829	.075	2	.187	84											2	2.5	3	3.5	4						
	.075	2	.250	84																2	2.5	3	3.5	4	
MS-35830	.090	2	.250	84											3	3.5	4	5							
	.090	2	.312	84					4	5	6														
	.090	2	.375	84																					
MS-35831	.125	2	.312	84	4	5													4	5	6				
	.125	2	.375	84						4	5	6													

Notes: 1. The MS part number consists of the MS No. plus the Dash No. followed by the applicable letter for material, i.e., MS35821-6A or MS35821-8D.
 2. Materials are available in A aluminum, B brass leaf & copper pin, C stainless steel leaf & pin, D plain steel leaf & pin, and E plain steel leaf, cadmium-plated & brass pin.
 3. When protective finish is required for D materials, add F to the dash number, i.e., MS35821-8DF.
 4. See Military Specifications for more detailed information on materials and finishes.

A-A-55000 SERIES CONTINUOUS HINGES

MS No.	Leaf				Dash No. - Open Width																				
	Thickness	Knuckle	Pin Dia.	Length	-1	-2	-3	-4	-5	-6	-7	-8	-9	-10	-11	-12	-13	-14	-15	-16	-17	-18	-19	-20	
A-A-55589	.032	.50	.063	72						.75	1	1.06	1.25	1.5											
A-A-55590	.040	.50	.091	72									1.06	1.25	1.5	2									
	.040	.62	.091	72.50													1.06	1.25	1.5	2					
A-A-55591	.050	.62	.125	72.50					1.06	1.5	2	2.5													
A-A-55592	.060	.62	.125	85									1.06	1.5	2	2.5									
	.060	1	.125	84													1.06	1.5	2	2.5					
A-A-55593	.060	1	.187	84									1.06	1.5	2	2.5									
	.060	2	.187	84													1.06	1.5	2	2.5					
A-A-55594	.075	2	.187	84											2	2.5	3	3.5	4						
	.075	2	.250	84																2	2.5	3	3.5	4	
A-A-55595	.090	2	.250	84											3	3.5	4	5							
	.090	2	.312	84					4	5	6														
	.090	2	.375	84																					
A-A-55596	.125	2	.312	84	4	5														4	5	6			
	.125	2	.375	84						4	5	6													

Notes: 1. The AA part number consists of the AA No. plus the Dash No. followed by the applicable letter for material, i.e., AA55589-6A or AA55589-8D.
 2. Materials are available in A aluminum, B brass leaf & copper pin, C stainless steel leaf & pin, D plain steel leaf & pin, and E plain steel leaf, cadmium-plated & brass pin.
 3. C materials will be supplied with passivated leaves.
 4. When protective finish is required for D materials, add F to the dash number, i.e., AA55589-8DF.
 5. See Military Specifications for more detailed information on materials and finishes.

COMPRESSION SPRING CATCH AND STRIKE

Part No.	Overall Length	Maximum Width	Holes	Material	Finish
MS18015002 (Catch)	Per MS	Per MS	.128	Steel & Stainless	Zinc with Yellow Chromate
MS18015003 (Strike)	Per MS	Per MS	.128	Steel & Stainless	Zinc with Yellow Chromate

Note: One (1) MS-18015-2 (Catch) and one (1) MS-18015-3 (Strike) equals one (1) MS-18015-1.



MILITARY HARDWARE

CHEST HANDLES

Part No.	Finish	Holes	Plate	Width of Bail Inside	Material
MS35791001	Per MS	4	3.62 x 2.94	3.50	Steel
MS35791002	Per MS	4	4.88 x 4.19	4.50	Steel
MS35793001	Per MS	5	4.88 x 4.19	4.50	Steel

SPRING-LOADED CHEST HANDLES

Part No.	Finish	Holes	Plate	Width of Bail Inside	Material Back Plate	Bail
MS18012001	Per MS	Yes	4.75 x 2.75	4.38	Per MS	Per MS
MS18012002	Per MS	No	4.75 x 2.75	4.38	Per MS	Per MS
MS18012003	Per MS	Yes	4.75 x 2.75	4.38	Per MS	Per MS
MS18012004	Per MS	No	4.75 x 2.75	4.38	Per MS	Per MS
MS18012005	Per MS	Yes	4.75 x 2.75	4.38	Per MS	Per MS
MS18012006	Per MS	No	4.75 x 2.75	4.38	Per MS	Per MS

NAVY LOCKER HARDWARE



No. 8696-15
Buships-Part No. 13
2" "T" Handle
Cast Brass
Satin Nickel



No. 8726-32
Buships-Part No. 42
Latch
Escutcheon
Stainless Steel



No. 7174-15
Buships-Part No. 5
3" Pull
Cast Brass
Satin Nickel



No. 8697-15
Buships-Part No. 21
2" "T" Handle
Cast Brass
Satin Nickel



No. 8213-02
Buships-Part No. 41
Latch
Plain Steel
Zinc Plated



No. 8613-15
Buships-Part No. 32
Handle
Cast Brass
Satin Nickel

No. 8213-32
Stainless Steel



No. 8234-15
Buships-Part No. 33
Cast Brass Strike
Satin Nickel



No. 8612-02
Buships-Part No. 40
Strap
Steel
Zinc-Plated

No. 8612-32
Stainless Steel



No. 10406-15*
Buships-Part No. 10
Strike
Cast Brass
Satin Nickel



No. 8614-02
Buships-Part No. 39
Cam
Steel
Zinc-Plated

No. 8614-32
Stainless Steel

Note: Reference Buships Print No. S-3200-860055.

* This strike is on Buships drawing 805-1749239.

ROD PULLS DIECAST PULLS STEEL HANDLES DOOR PULLS CHEST HANDLES SPRING



HANDLES & PULLS

CONTENTS

34 Rod Pulls

34 Diecast Pulls

34 Stainless Steel Pulls

35 Aluminum Pulls

35 Brass Pulls

36 Steel Handles

36 Solid Brass Knobs

36 Flush Door Pulls

37 Flush Drawer Pulls

37 Chest Handles

38 Steel Cover Chest Handles

38 Spring-Loaded Chest Handles



HANDLES AND PULLS



ROD PULLS

Part No.	C to C	Projection	Rod Dia.	Material	Finish	Tapped
750-26D	2.50	1.22	.312	Brass	Satin Chrome	8-32
751-26D	3.00	1.22	.312	Brass	Satin Chrome	8-32
752-26D	3.50	1.22	.312	Brass	Satin Chrome	8-32
753-26D	4.00	1.22	.312	Brass	Satin Chrome	8-32
754-26D	5.00	1.22	.312	Brass	Satin Chrome	8-32
851-32B	3.00	1.40	.375	Stainless	Burnished	8-32
852-32B	3.50	1.40	.375	Stainless	Burnished	8-32
853-32B	4.00	1.40	.375	Stainless	Burnished	8-32
854-32B	5.00	1.40	.375	Stainless	Burnished	8-32
951-28A	3.00	1.22	.312	Aluminum	Satin Anodized	8-32
952-28A	3.50	1.22	.312	Aluminum	Satin Anodized	8-32
953-28A	4.00	1.22	.312	Aluminum	Satin Anodized	8-32
954-28A	5.00	1.22	.312	Aluminum	Satin Anodized	8-32



DIE CAST PULLS

Part No.	C to C	Projection	Face	Finish	Tapped
R102-26	3.00	.81	.31	Bright Chrome	8-32



Part No.	C to C	Projection	Face	Finish	Tapped
4750-26	2.75	.70	.27	Bright Chrome	8-32



Part No.	C to C	Projection	Face	Finish	Tapped
2197-26	4.00	1.00	-	Polished Chrome	10-24



STAINLESS STEEL PULLS

Part No.	C to C	Projection	Face	Finish	Tapped
1900-32D	4.00	1.31	.625	Satin	8-32
1901-32D	5.00	1.31	.625	Satin	8-32

ALUMINUM PULLS

Part No.	C to C	Projection	Overall	Finish	Tapped
420-28A	1.00	.87	2.00	Satin Anodized	8-32
425-28A	1.50	.87	2.50	Satin Anodized	8-32
435-28A*	2.50	.87	3.50	Satin Anodized	8-32
445-28A	3.50	.87	4.50	Satin Anodized	8-32
455-28A	3.50	.87	5.50	Satin Anodized	8-32



Part No.	C to C	Projection	Face	Finish	Tapped
165-28A	3.50	.87	.500	Satin Anodized	8-32
167-28A	3.00	.87	.500	Satin Anodized	8-32
2041-28A	4.00	1.06	.313	Satin Anodized	10-24



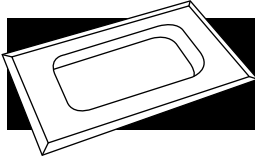
Part No.	C to C	Projection	Face	Finish	Tapped
7929-28A	3.75	1.00	.375	Satin Anodized	10-24
8215-28A	4.00	1.06	.437	Satin Anodized	10-24
8419-28A	5.00	.94	.375	Satin Anodized	10-24



Part No.	C to C	Projection	Face	Finish	Tapped
5207-28A	3.75	1.01	.625	Satin Anodized	10-24
2644-28A	4.00	1.01	.625	Satin Anodized	10-24
7005-28A	4.00	1.01	.500	Satin Anodized	10-24



* Tapped with 4 holes for both 2.50" or 3.00" C to C



HANDLES AND PULLS



No. 482



No. 14786-26



No. 1904-26



No. 8305-14

STEEL HANDLES

Part No.	Finish	Holes	Size
482-1-02	Zinc	Yes	5.00 x 1.25
482-2-02	Zinc	Yes	5.75 x 1.50
NHPS48220	None	No	5.75 x 1.50
482-3-02	Zinc	Yes	6.53 x 1.62
NHPS48230	None	No	6.37 x 1.62
482-4-02	Zinc	Yes	7.75 x 2.25

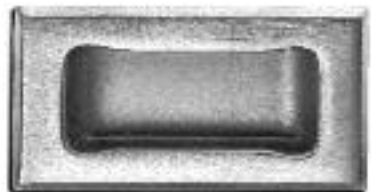
Part No.	Overall Length	Projection	Hole Diameter	Finish
14786-26	13.00	2.20	1/4-20 ctsk	Bright Chrome
1904-26	8.31	1.75	#14 ctsk	Bright Chrome
8305-14	4.68	1.40	.213	Bright Nickel



Series G101, G102, G103 & G105 knobs

SOLID BRASS KNOBS

Part No.	Finishes	Diameter	Tapped
G102-26	Bright Chrome	.62	10-24
G103-03	Bright Brass	.87	10-24
G103-26	Bright Chrome	.87	10-24

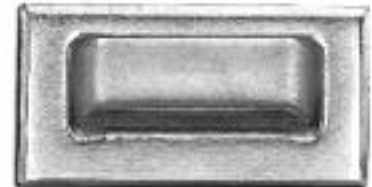


FLUSH DOOR PULLS

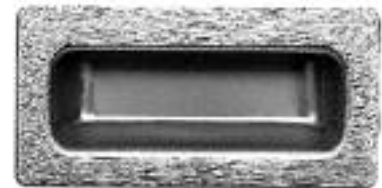
Part No.	Material	Mounting	C to C	Finish	Plate Size
1896-32D	Stainless	Flat for Spot Welding	-	Satin	4.75 x 2.42
1897-32D	Stainless	Beveled Edge w/ 10-32 Studs	4.00	Satin	4.75 x 2.42

FLUSH DRAWER PULLS

Part No.	Material	Mounting	C to C	Finish	Plate Size
1898-02	Steel	Flat for Spot Welding	-	Zinc	4.75 x 2.42
1898-32D	Stainless	Flat for Spot Welding	-	Satin	4.75 x 2.42
1899-02	Steel	Beveled Edge w/ 10-32 Studs	4.00	Zinc	4.75 x 2.42
1899-32D	Stainless	Beveled Edge w/ 10-32 Studs	4.00	Satin	4.75 x 2.42
7338-32D	Stainless	Flat for Spot Welding	-	Satin	4.00 x 2.00
7836-32D	Stainless	Beveled Edge w/ 8-32 Studs	3.62	Satin	4.00 x 2.00



No. 1899-02, 1899-32, 7836-32D,
and 7836-26D



No. 1898-02, 1898-32D
and 7338-32D

CHEST HANDLES

Part No.	Finish	Holes	Plate	Width of Bail		Material
				Inside	Outside	
1205-275-02*	Zinc	3	2.68 x 2.00	2.75		Steel
1205-350-02	Zinc	4	3.62 x 2.94	3.62		Steel
NHPS1205-350	None	None	3.62 x 2.94	3.62		Steel
1205-400-02	Zinc	4	4.06 x 3.00	4.12		Steel
NHPS1205-400	None	None	4.06 x 3.00	4.12		Steel
1205-475-02	Zinc	4	4.88 x 4.19	4.50		Steel
NHSS1207	None	None	3.38 x 1.75	3.37		Stainless
WHSS1207	None	4	3.38 x 1.75	3.32		Stainless
NHPS1207	None	None	3.38 x 1.75	3.37		Steel



No. 1205



No. 1207

* 3rd hole centered on top half of plate.



HANDLES AND PULLS



No. 8310

STEEL COVER CHEST HANDLES

Part No.	Finish	Holes	Width of Bail	
			Plate	Inside
8310-14	Nickel	.201	3.62 x 1.78	3.75
NHPS8310	None	No	3.62 x 1.78	3.75



No. 8315

SPRING-LOADED CHEST HANDLES

Part No.	Finish	Holes	Plate	Width of Bail		Material	
				Inside	Back Plate	Bail	
NHPS8315	None	No	5.12 x 1.62	4.50	Steel	Steel	
8315-14	Nickel	Yes	5.12 x 1.62	4.50	Steel	Steel	



No. 945

SPRING-LOADED CHEST HANDLES

Part No.	Finish	Holes	Plate	Width of Bail		Material	
				Inside	Back Plate	Bail	
945SS2RG	None	No	4.91 x 2.88	4.50	Aluminum	Stainless	
H955AL2RG	None	Yes	4.88 x 2.00	4.06	Aluminum	Aluminum	



No. 955



No. 1209

SPRING-LOADED CHEST HANDLES

Part No.	Finish	Holes	Plate	Width of Bail		Material
				Inside		
1209-14	Nickel	#10	5.00 x 2.44	3.75	Steel	